



7 Osgodby Crescent, Scarborough, YO11 3JP

Guide Price £195,000

- *Immaculately presented two-bedroom semi-detached bungalow*
- *Contemporary fully tiled shower room*
- *Beautifully maintained, low-maintenance gardens to front and rear*
- *Spacious and light-filled living room with large picture window*
- *Two well-proportioned double bedrooms*
- *Driveway parking and detached garage*
- *Stylish modern fitted kitchen*
- *Principal bedroom with French doors to rear patio*
- *Sought-after residential location ideal for downsizers or retirement living*

7 Osgodby Crescent, Scarborough YO11 3JP

Immaculately presented throughout, this attractive two-bedroom semi-detached bungalow offers stylish single-level living in a sought-after residential setting. Featuring a spacious living room, modern kitchen, contemporary shower room and beautifully maintained gardens, the property also benefits from driveway parking, detached garage and a private rear patio ideal for outdoor relaxation. A superb turnkey home perfectly suited to downsizers, retirees or those seeking low-maintenance living.



Council Tax Band: B



A beautifully presented two-bedroom semi-detached bungalow enjoying an elevated position within a quiet and well-established residential setting, offering stylish and easily maintained accommodation throughout, together with attractive landscaped gardens, driveway parking and a detached garage.

This delightful home has been thoughtfully modernised and impeccably maintained by the current owners, creating a bright and welcoming interior ideally suited to a wide range of purchasers including downsizers, retirees and those seeking comfortable single-level living.

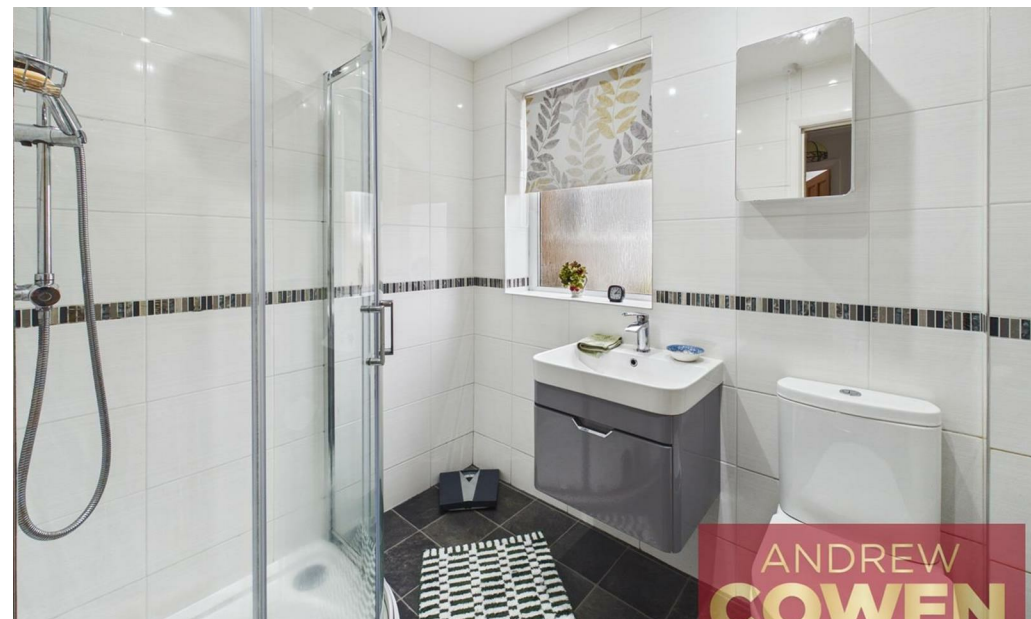
The accommodation briefly comprises an entrance hallway leading through to a generous and light-filled living room with large picture window overlooking the front garden. The modern fitted kitchen is finished in an attractive contemporary style with ample worktop space and integrated cooking appliances, whilst offering direct access to the rear patio and garden — ideal for everyday convenience and outdoor entertaining.

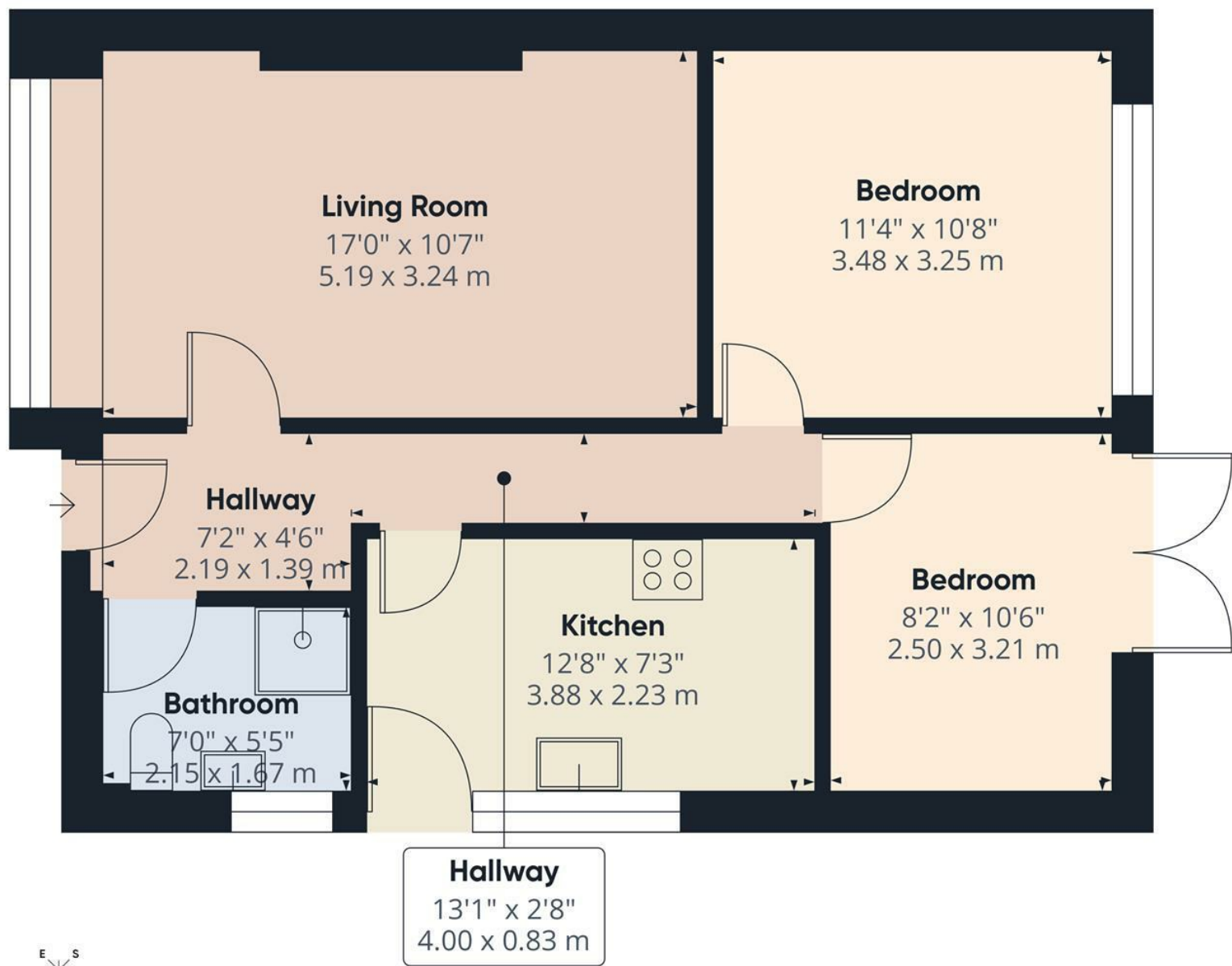
There are two well-proportioned double bedrooms, both beautifully presented, with the principal bedroom enjoying French doors opening directly onto the rear patio area. The contemporary shower room has been stylishly upgraded with modern tiling, vanity storage and a corner shower enclosure.

Externally, the property occupies a particularly pleasant plot with neatly maintained gardens to both front and rear. The enclosed rear garden has been designed for ease of maintenance and features paved seating areas and colourful planted borders, providing a private and relaxing outdoor space. A driveway to the side provides off-street parking and leads to a detached garage.

Further benefits include gas central heating, double glazing and tasteful neutral décor throughout.

Early viewing is highly recommended to fully appreciate the quality, presentation and excellent location this bungalow has to offer.





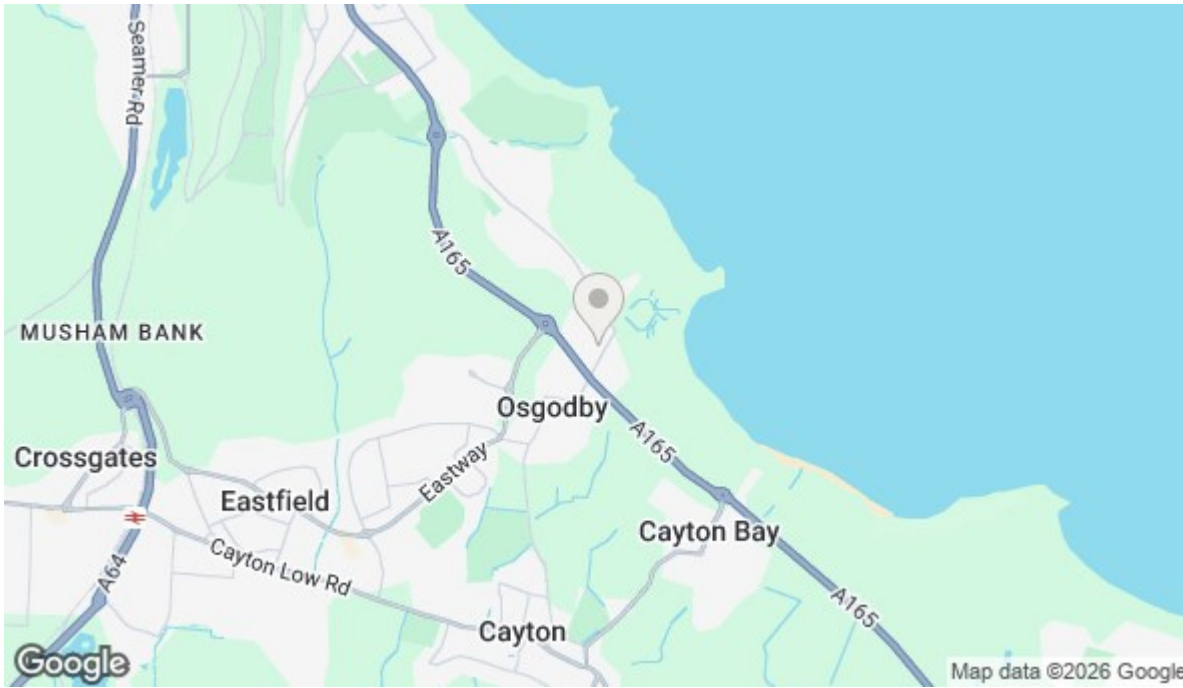
Approximate total area⁽¹⁾
604 ft²
56 m²

(1) Excluding balconies and terraces


Calculations reference the RICS IPMS 3C standard. Measurements are approximate and not to scale. This floor plan is intended for illustration only.

GIRAFFE360





Energy Efficiency Rating

	Current	Potential
<i>Very energy efficient - lower running costs</i>		
(92 plus) A		
(81-91) B		
(69-80) C		
(55-68) D		
(39-54) E		
(21-38) F		
(1-20) G		
<i>Not energy efficient - higher running costs</i>		
England & Wales	EU Directive 2002/91/EC	

Viewings

Call the office to make an appointment today!

01723 377707



View our website here!

Looking to Sell?

Book a no obligation valuation today!

01723 377707